

IDEAL STANDARD S.A.

Regions: Greece
Mediterranean
Middle East, Asia

265, Messogion Avenue
154 51 N. Psychiko
Athens - Greece
Tel.: +30 210 6790800 / 6790877
Fax: +30 210 6790892

Ideal Standard International

Group of companies
Brussels - Belgium

www.idealstandard.com



Ideal Standard follows the policy of a continuous & consistent improvement on the design & functionality of its models. Thus, it has the right to change its manufacturing prescriptions at any time.
02/13 - GRSAL13MGBRAI.

ECO <W30> STYLISH AND RELIABLE



A
BEAUTIFUL
USE
OF
SPACE



A
BEAUTIFUL
USE
OF
SPACE

THE NEW STRUCTURE IN BUILT-IN TANKS

Ideal Standard, trying to strengten its presence in the "Market" of the Built-in Tanks, is introducing the all new ECO <W30> Series! Discover a complete range of Built-in cisterns, for use with single and wall hung bowls. Its advantages excite you at once: very easy access to the internal components of the cistern for easy maintenance and a very competitive price!

The new built-in tank series ECO <W30> offers you functionality and ideal fit. Its new structure is only 350 mm wide which gives the opportunity to fit in all bathrooms, even in small toilet areas. The cistern reservoir is one piece (not in 2 parts as usual), as to avoid breakage during the transportation. An additional advantage of the ECO <W30> is the possibility to flush at 4,5/3 Lt under a different code.



Dual Flush function. Control Plate available in two different designs.



Galvanized tubular frame. The attachment of the pipe to the frame is simplified by a clip-on collar.

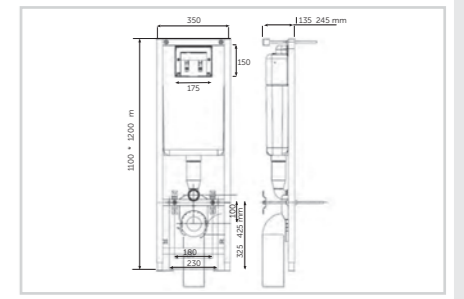
TECHNICAL SPECIFICATIONS

BUILT IN TANKS & PLATES



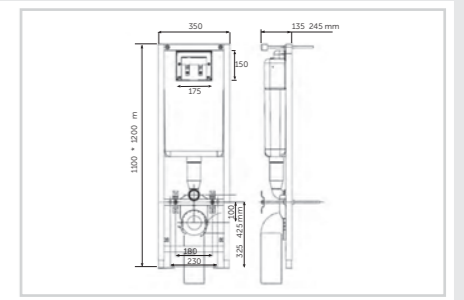
Built-in Tank Dual Flush - Pack

| Product | Code |
|---|---------|
| Tank with galvanized tubular frame & chrome plate | W3089AA |
| Tank with galvanized tubular frame & mat-chrome plate | W3089AD |
| Tank with galvanized tubular frame & white plate | W3089AC |



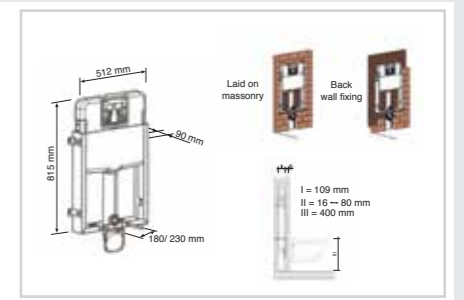
Built-in Tank Dual Flush

| Product | Code |
|--|---------|
| With galvanized tubular frame, without plate | W309567 |



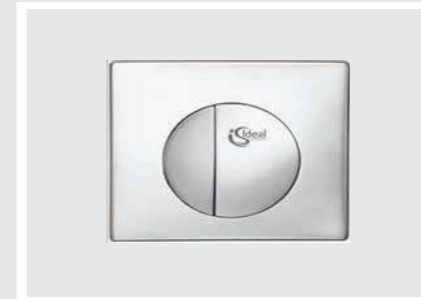
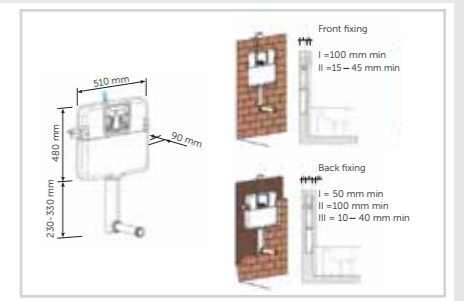
Built-in Tank Dual Flush

| Product | Code |
|--------------------------------------|---------|
| With galvanized frame, without plate | W309967 |



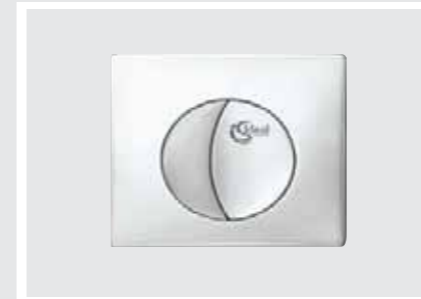
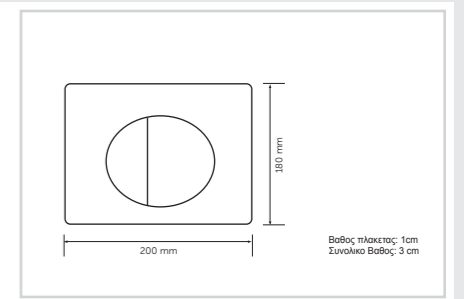
Built-in Tank Dual Flush

| Product | Code |
|---------------------------------|---------|
| Without frame and without plate | W370067 |



Control Plate Dual Flush with straight lines

| Product | Code |
|------------|---------|
| Chrome | W3091AA |
| Mat-chrome | W3091AD |
| White | W3091AC |



Control Plate Dual Flush with curved lines

| Product | Code |
|---------|---------|
| Chrome | W3703AA |

