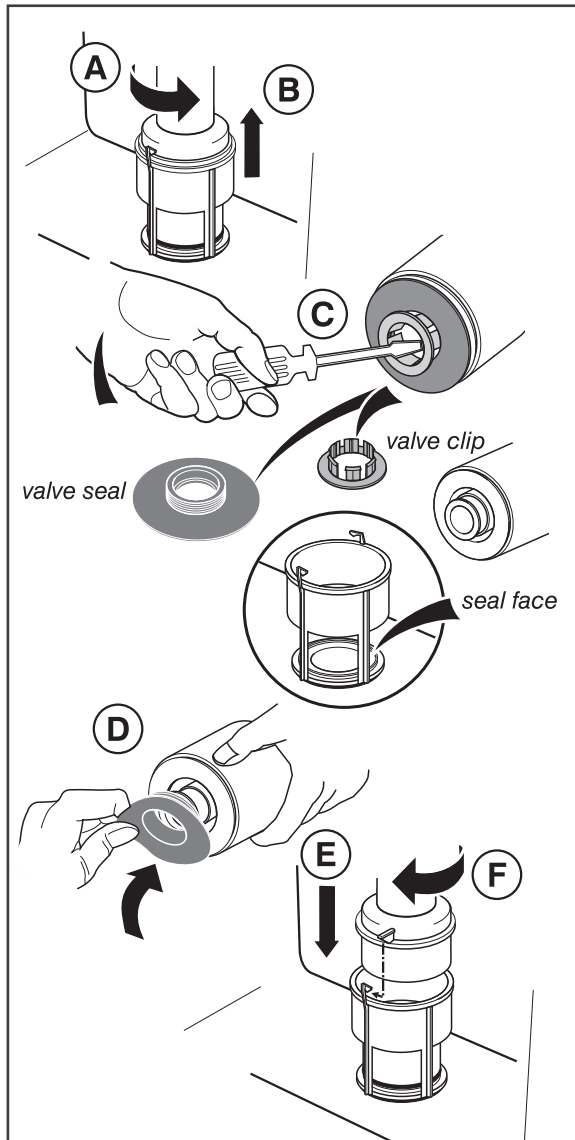


# LEAVE WITH USER FOR REFERENCE

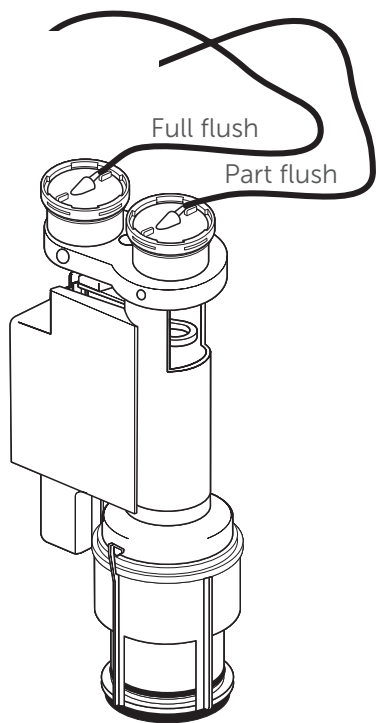
## Cistern Outlet Valve Maintenance Procedure

The cistern outlet valve should be checked and the seal cleaned periodically

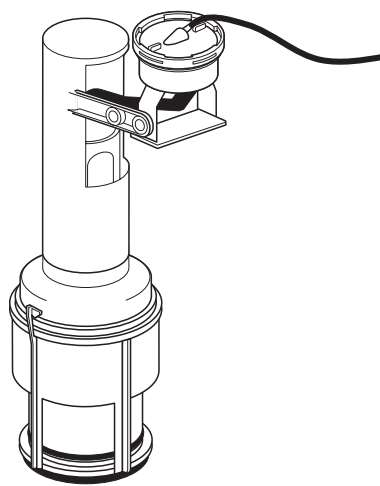


Waterproof sealant **MUST NOT BE USED** to seal, as this will have a detrimental effect on all submerged rubber seals.

# Freeflow Outlet Valve



**Dual flush**



**Single flush**

Follow valve removal and replacement described on previous page. Push fit pneumatic tubes on to outlet valve and flushplate or button. Ensure this is tight and tubing is free from kinks and trappings. Replacement tubing is available seperatley - SV31667

**All system components must be installed in accordance with UK water regulations. If in doubt a suitably qualified person should be consulted.**  
**We pursue a policy of continuing improvement in design and performance of our products. The right is, therefore, reserved to vary specifications without notice.**

**Ideal Standard UK Ltd., The Bathroom Works, National Avenue, Hull, HU5 4HS**

**EEM3448167**  
**4814**

ver. 2.0/07.22