

# LOW FLOW AERATORS OVERVIEW

---



Ideal Standard

# INTRODUCTION TO: AERATORS

---

Aerators are found in nearly all kitchen and lavatory fittings. An aerator is a key component in the overall performance of the fitting.

Here is how you should expect your aerator to perform:

- CONTROL THE STREAM STRAIGHTNESS AND DIAMETER.
- REDUCE SPLASH BY AERATING THE STREAM.
- ELIMINATING SIDE SPRAY.
- SAVE WATER AND REDUCE ENERGY COSTS.
- MEET LOCAL PLUMBING CODES AND STANDARDS

## European Standard

Requirements on flow rate and noise reduction: the requirements for faucet attachments with or without aeration are described in the European standard EN 246 «Sanitary tapware – General specifications for flow rate regulators».



**LOW FLOW  
AERATORS:  
OVERVIEW**



**SENSORFLOW 21  
CERAPLUS\***

1,3 l/min  
[0,35gpm]

**A861604NU**



1,9 l/min  
[0,5gpm]

**A861605NU**



**SENSORFLOW  
CERABASE  
SENSORFLOW WAVE**

1,3 l/min  
[0,35gpm]

**A861606NU**



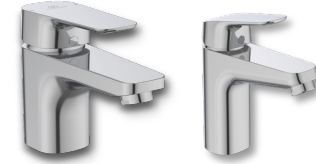
1,9 l/min  
[0,5gpm]

**A861607NU**



3 l/min  
[0,8gpm]

**A861608NU**



**CERAPLAN  
CERAFLEX**

1,3 l/min  
[0,35gpm]

**A861609AA**



1,9 l/min  
[0,5gpm]

**A861610AA**



3 l/min  
[0,8gpm]

**A861611AA**



**JOY  
CERAPLUS\*  
SENSORFLOW WAVE\***

1,3 l/min  
[0,35gpm]

**A861612NU**



1,9 l/min  
[0,5gpm]

**A861613NU**



\*See detailed product list

SOLD IN BOXES OF 10 PIECES.

# CERAFLEX & SENSORFLOW

	CODE	DESCRIPTION	INSERT 1,3 l/min [0,35gpm]	INSERT 1,9 l/min [0,5gpm]	INSERT 3 l/min [0,8gpm]	FULL ASSEMBLY 1,3 l/min [0,5gpm]	FULL ASSEMBLY 1,9 l/min [0,5gpm]	FULL ASSEMBLY 3 l/min [0,8gpm]
	B2326AA	<b>Cerflex Basin Mixer - Grande</b> (1 Gallon Per Minute) – UK Version	A861604NU 	A861607NU 				
	A6162AA	<b>Sensorflow Wave Electronic Basin Mixer</b> (BATTERY OPERATED)	A861606NU 	A861607NU 	A861608NU 	A861609AA 	A861610AA 	A861611AA 
	A6163AA	<b>Sensorflow Wave Electronic Basin Mixer</b> (MAINS OPERATED)						
	A6160AA	<b>Sensorflow Wave Electronic Basin No Mixer</b> (BATTERY OPERATED)						
	A6161AA	<b>Sensorflow Wave Electronic Basin No Mixer</b> (MAINS OPERATED)						
	A6171AA	<b>Sensorflow Wave Electronic Hidden Built-in Basin Mixer - 230mm Spout</b> (MAINS OPERATED)		A861613NU 				
	A6165AA	<b>Sensorflow Wave Electronic Built-in Basin Mixer - 150mm Spout</b> (MAINS OPERATED)						
	A6169AA	<b>Sensorflow Wave Electronic Built-in Basin Mixer - 150mm Spout</b> (MAINS OPERATED)						

# CERAPLUS

CODE	DESCRIPTION	INSERT 1,3 l/min [0,35gpm]	INSERT 1,9 l/min [0,5gpm]
A7441AA	<b>Ceraplus Electronic Basin Mixer</b> (BATTERY OPERATED) - MENA VERSION		
A7442AA	<b>Ceraplus Electronic Basin Mixer</b> (MAINS OPERATED) - MENA VERSION		
A7427AA	<b>Ceraplus Electronic Exposed Basin Mixer</b> (SENSOR OPERATED) - MENA VERSION		
A7426AA	<b>Ceraplus Electronic Basin Mixer</b> (INFRA/BATTERY OPERATED) - MENA VERSION		
A4151AA	<b>Ceraplus Electronic Basin No Mixer Integrated</b> (BATTERY OPERATED)		
A4153AA	<b>Ceraplus Electronic Basin No Mixer Integrated</b> (BATTERY OPERATED)		
A7444AA	<b>Ceraplus Electric Thermostatic Basin Mixer, Kit 2 - 150mm Spout</b> (MAINS OPERATED) - MENA VERSION		
A4152AA	<b>Ceraplus Electronic Basin Mixer Integrated</b> (BATTERY OPERATED)		
A4154AA	<b>Ceraplus Electronic Basin Mixer Integrated</b> (MAINS OPERATED)		
F1739AA	<b>Ceraplus Electronic Basin Mixer Integrated</b> (BATTERY OPERATED) - BO		
A4160AA	<b>Ceraplus Electronic Exposed 150mm Spout</b> (SENSOR SEPARATED)		
A4161AA	<b>Ceraplus Electronic Exposed 230mm Spout</b> (SENSOR SEPARATED)		
A4159AA	<b>Ceraplus Electric Exposed Built-in Sensor</b>		





A861604NU



A861605NU



# CERAPLUS

CODE	DESCRIPTION	INSERT 1,3 l/min [0,35gpm]	INSERT 1,9 l/min [0,5gpm]
A6149AA	Ceraplus Electronic Hidden Built-in Basin Mixer, KIT 2 – 150mm Spout (BATTERY OPERATED)		
A6150AA	Ceraplus Electronic Hidden Built-in Basin Mixer, KIT 2 – 150mm Spout (MAINS OPERATED)		
A6153AA	Ceraplus Electronic Hidden Built-in Basin Mixer, KIT 2 – 230mm Spout (BATTERY OPERATED)		
A6154AA	Ceraplus Electronic Hidden Built-in Basin Mixer, KIT 2 – 150mm Spout (MAINS OPERATED)	A861612NU	A861613NU
A6733AA	Ceraplus Basin No Mixer, KIT 2 – 150mm Spout (BATTERY OPERATED)		
A6147AA	Ceraplus Electric Thermostatic Basin Mixer, KIT 2 – 150mm Spout (BATTERY OPERATED)		
A6148AA	Ceraplus Electric Thermostatic Basin Mixer, KIT 2 – 150mm Spout (MAINS OPERATED)		
A6151AA	Ceraplus Electric Thermostatic Basin Mixer, KIT 2 – 230mm Spout (BATTERY OPERATED)		
A6152AA	Ceraplus Electric Thermostatic Basin Mixer, KIT 2 – 230mm Spout (MAINS OPERATED)		





Ideal Standard

[IDEALSTANDARD.COM](http://IDEALSTANDARD.COM)