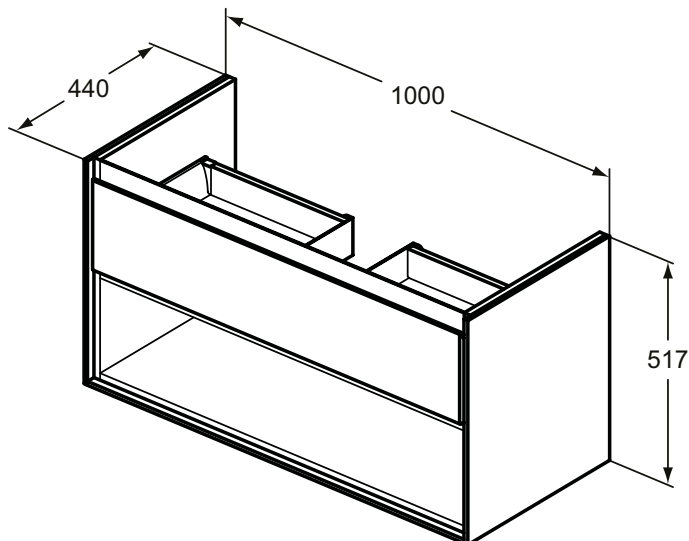
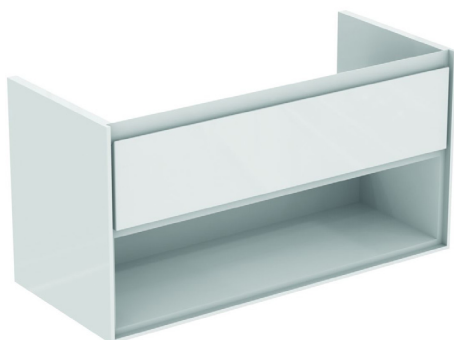


Furniture

Connect Air



Article-No.: **E0828B2**

Basin unit 100cm, 1 drawer

Connect Air basin unit 100 cm with 1 drawer with edged panel (handle not necessary) and Soft close system. With open storage shelf below the drawer. Including: Mounting kit. For assembly with: Connect Air Vanity basin 104 cm E0274 or Vessel basin 60 cm E0348 / 40 cm E0347 (with required Worktop E0851). Recommended: Space Saving Siphon EE23033967 (please, order separately). See the IS Catalogue/Price list for more information on Recommended equipment and type of materials used.

Colour: B2 - Main outer finish is Gloss White, Internal finish is Matt White

More product details:

Type:	Vanity unit
Mounting:	Wall mounted
Style:	Contemporary
Net Weight (kg):	34,3
Material:	Lacquered MDF
Designer:	Studio Levien
Height (mm):	517
Width (mm):	1000
Depth (mm):	440
Shape:	Rectangular
Installation:	Wall mounted