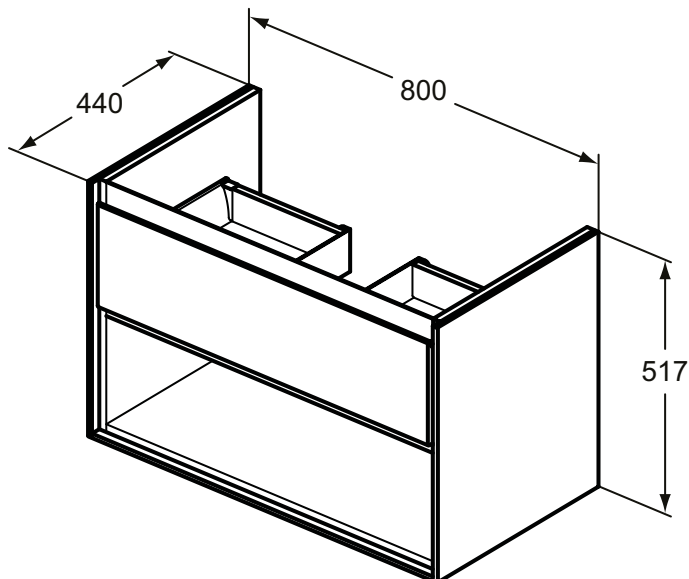
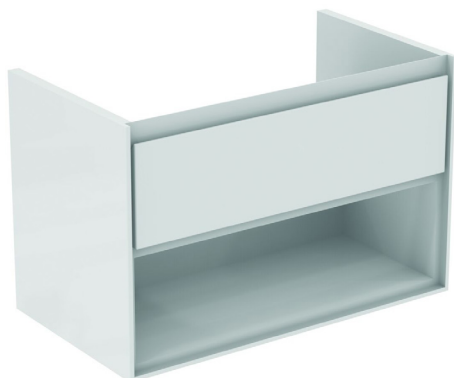


## Furniture

## Connect Air



Article-No.: **E0827B2**

### Basin unit 80cm, 1 drawer

Connect Air basin unit 80 cm with 1 drawer with edged panel (handle not necessary) and Soft close system. With open storage shelf below the drawer. Including: Mounting kit. For assembly with: Connect Air Vanity basin 84 cm E0279 or Vessel basin 60 cm E0348 / 40 cm E0347 (with required Worktop E0849). Recommended: Space Saving Siphon EE23033967 (please, order separately). See the IS Catalogue/Price list for more information on Recommended equipment and type of materials used.

**Colour:** B2 - Main outer finish is Gloss White, Internal finish is Matt White

#### More product details:

|                  |               |
|------------------|---------------|
| Type:            | Vanity unit   |
| Mounting:        | Wall mounted  |
| Style:           | Contemporary  |
| Net Weight (kg): | 27,2          |
| Material:        | Lacquered MDF |
| Designer:        | Studio Levien |
| Height (mm):     | 517           |
| Width (mm):      | 800           |
| Depth (mm):      | 440           |
| Shape:           | Rectangular   |
| Installation:    | Wall mounted  |