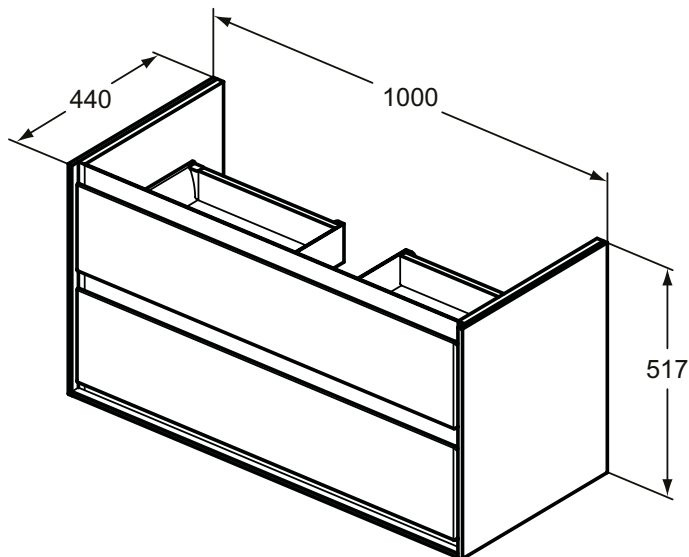
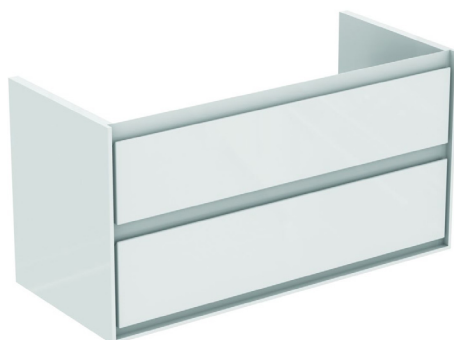


## Furniture

## Connect Air



Article-No.: **E0821B2**

### Wall mounted basin unit 100cm, 2 drawers

Connect Air basin unit 100 cm with 2 drawers with edged panels (handles not necessary) and Soft close system. Including: Mounting kit. For assembly with: Connect Air Vanity basins 104 cm E027401 or Vessel basin 60 cm E034801/40 cm E034701 with required Worktop E0851. Recommended: Space Saving Siphon EE23033967 (please, order separately). See the IS Catalogue/Price list for more information on Recommended equipment and type of materials used.

**Colour:** B2 - Main outer finish is Gloss White, Internal finish is Matt White

#### More product details:

Type:	Vanity unit
Mounting:	Wall mounted
Style:	Contemporary
Net Weight (kg):	40,3
Material:	Lacquered MDF
Designer:	Studio Levien
Height (mm):	517
Width (mm):	1000
Depth (mm):	440
Shape:	Rectangular
Installation:	Wall mounted