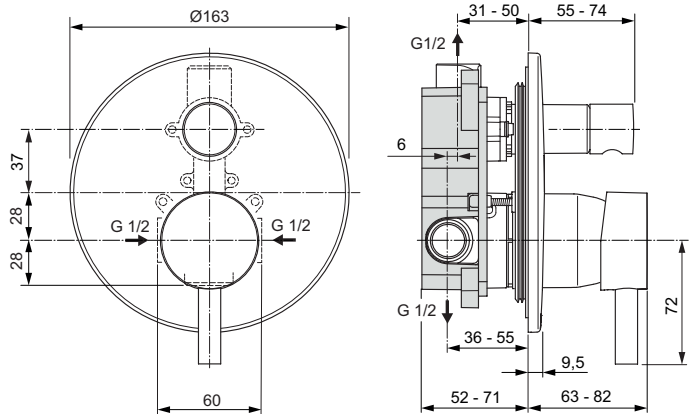


Taps & mixers; Showering

Ceraline



Article-No.: **A6939AA**

Bath & shower built-in mixer

Ceraline bath & shower built in mixer with 47 mm Click cartridge, hot water limiter, round escutcheon for built in installation, diverter with pull-knob, chrome. Both KIT 1 & KIT 2 are included.

Colour: AA - Chrome

Features:

- Temperature limit stop

More product details:

Type:	Bath-shower mixer
Mounting:	Wall mounted
Operation Type:	Single Lever
Net Weight (kg):	1.5
Material:	Chrome
Height (mm):	163
Width (mm):	163
Depth (mm):	63-82
Shape:	round